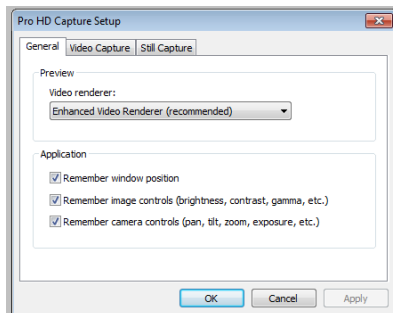


## ProHD Capture Set Up

1. Plug your camera in.
2. Open ProHD Capture.

### SETTING UP THE SAVING PARAMETERS

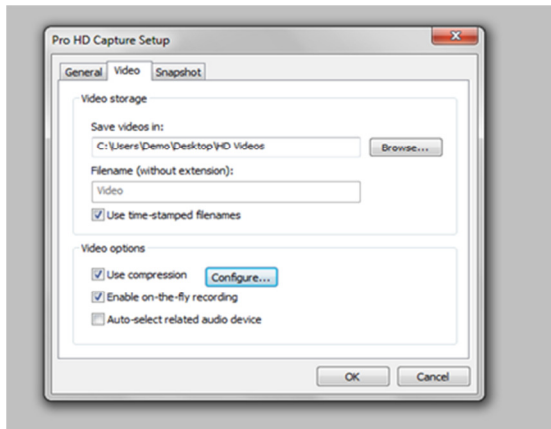
Go to: Options -> File Set Up menu



Please check the 3 "remember" boxes so that all your settings are saved on the camera when you close the software.

### CODEC SELECTION

Go in the "Video Capture" tab to configure your codec.



Video Storage:

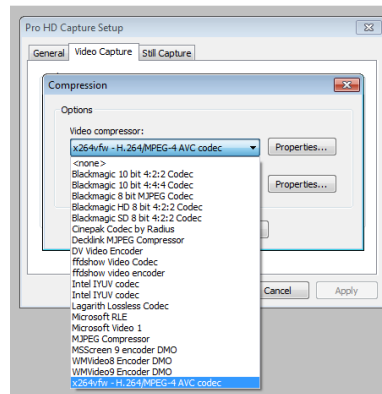
- The first text box is dedicated to specify the folder where you will save your videos, browse and choose your preferred location.

## Video Options:

- *On-the-fly recording* is recommended as it enhance the communication between the video system and the software during a recording.
- *Auto select related audio device* should be checked only if you want to switch to the LoupeCam built-in microphone for your recordings.
  
- A **codec** enables you to compress the video file and save space on your hard disk.

Check the "Use compression" box and click the "Configure" button.

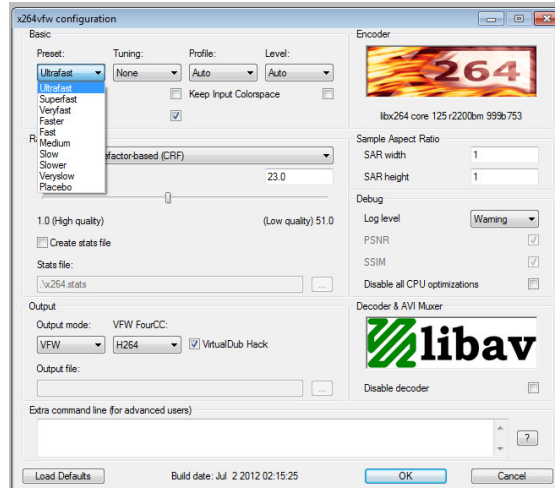
Drop down the Video Compressor box and choose your codec in the list:



Here you can select the codec you want to use with ProHD Capture.

We highly recommend using the codec we provided with the ProHD software. Please select the "x264vfw - H.264/MPEG-4 AVC codec", then click "properties" beside the drop box.

### x264 VFW CODEC PROPERTIES



- You will have to update the "preset" parameter to "Ultrafast".
- "Zero Latency" : the box must be checked
- "VirtualDub Hack": the box must be checked

Then OK.

## GETTING THE BEST IMAGE

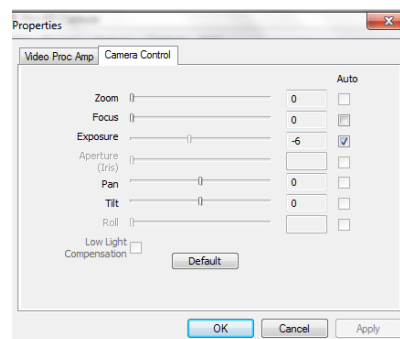
All the parameters described below have to be set up accordingly with the lighting of your environment and the brightness you'd like on your videos.

### EXPOSURE

Go to "Options" -> "Video Control Tunings"

The most important parameter is the "Exposure", in the "Camera Control" tab: it will control the luminosity of your videos. The lower is the value, the darker is the image.

The easier way is to check the "Auto" box, in order to manage your "Exposure" automatically.

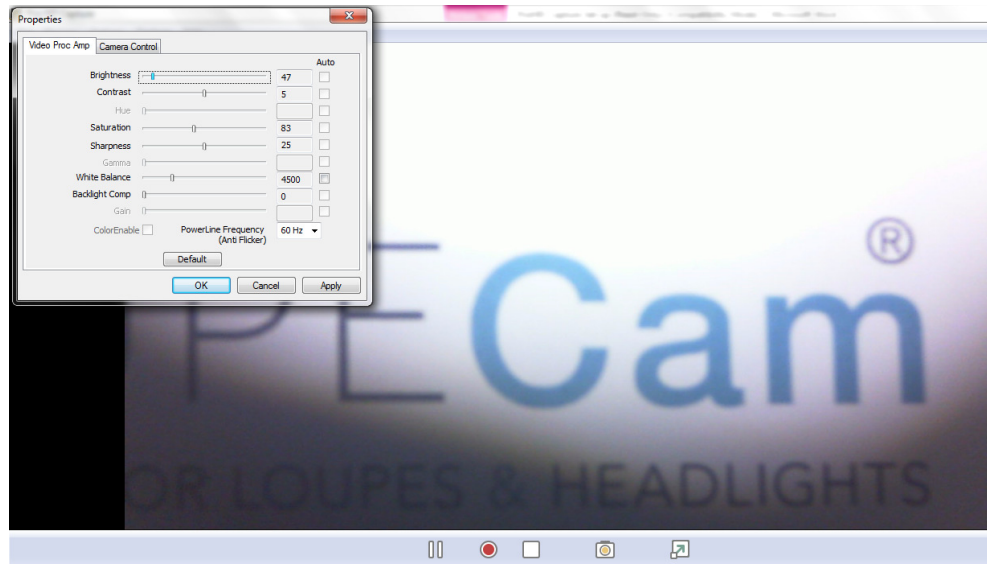


## BRIGHTNESS

You can also adjust the brightness and color in the first tab: "Video Proc Amp".

Brightness, Saturation and White Balance might be updated according to your preferences. It is better to uncheck all the "Auto" boxes so that you can manage your settings.

While you move the sliders, you can verify how your image will be modified depending on the values you choose.



---

**You are now ready to record your video.**

If your preview is jerky, your CPU is not powerful enough to compress and preview the video.

IN THAT CASE, PLEASE GO BACK TO X264 VFW CODEC PROPERTIES

and update the "preset" parameter to "Ultrafast" instead of "Superfast". The ultrafast mode will need less CPU, but the compression rate will be lower.



**NEVER UNPLUG THE CAMERA BEFORE CLOSING PROHD CAPTURE.**

When you close it, all your settings are saved on the camera, so you don't have to reconfigure everything each time you use it.